

Stealthbox®

INSTALLATION GUIDE for the

SB-GM-BURBSCNSL/10W3v2

(2003-Up Chevrolet Suburban, Tahoe,
Silverado &
GMC Yukon, YukonXL, Sierra with front
bucket seats and center console)



This Stealthbox is a product which requires professional installation skills and tools.

Please read this installation guide thoroughly before beginning the project. It will guide you step by step through the installation. Several of the steps in this process may require two people to accomplish.

It is absolutely vital that the enclosure be properly mounted to the vehicle according to these instructions. Failure to mount the enclosure properly presents two problems: 1) The sub-bass performance will suffer due to the movement of the enclosure caused by the force exerted by the woofer(s) and 2) A loose enclosure presents a serious safety hazard in the event of a collision or sudden deceleration.

Please enjoy your JL Audio Stealthbox responsibly.

JL AUDIO®
Ahead of the Curve™

www.jlaudio.com

START HERE



Read the instructions completely, before the start of the install.

This Stealthbox Enclosure install does require permanent modification to the OEM inner console.



STEP 1:

Engage the emergency brake.

Place the key into the ignition and turn to the accessory position.

The shifter and the steering wheel needs to be positioned all the way down.

Remove the front dash cluster panel, by pulling the dash trim towards you and work around the diameter. Be careful not to damage the four way light push button, located on top of the steering column.

Once the trim is removed. Place the transmission into park, remove the key from the ignition and pop the emergency brake.



STEP 3:

Pull the cup holders up and out of the center console.

STEP 4:

On the upper lip of the main storage bucket, remove all the screws, including the storage lid's screws.

STEP 5:

To remove the main storage bucket, remove the rubber mat. This will expose the four screws that need to be removed.

Once all these screws have been removed. Remove the storage bucket by lifting up and out of the console.

Continued on Next Page →

CAUTION

Cont. From Previous Page



The vehicle that you are working on might be equipped with side impact air bags. To remove the front seats, please follow these required procedures.

- 1) Disconnect the ground wire from the negative side of the battery.
- 2) Let the vehicle sit for 15 minutes. This allows the air bags to discharge.
- 3) Now you can remove the front seats and disconnect the air bag wire.

If you are not comfortable with disconnecting the air bag wires. This install can be accomplished by not removing the front seats. It will be tight quarters.

Trucks If you remove the front seats, you will have to place the seats back in and reconnect the air bag wires. Then repeat the removal process, in future steps. You might not want to remove the seats till then.



STEP 6: To remove the front bucket seats, you use a 15mm socket(not supplied) for the front nuts and a 12mm(not supplied) for the rear bolts.

Tilt the seats backward to access and disconnect the wiring. This does include the air bag wire.



STEP 7: Once the front seats have been removed, you will need to outline the outside of the center console with masking tape(not supplied). This will help in future steps.



STEP 8: With the upper storage pocket panel removed. You can view a pair of bolts. Using a 10mm socket(not supplied), remove these bolts.

If you have not removed the front seats, there are other bolts and screws that need to be located and removed. This is to allow the console to be removed out of the vehicle.



STEP 9: Look down in the console from the cup holder area. You need to locate and disconnect a white connection plug. Pull the lever on this white connection plug to disconnect from the wire harness..



STEP 10: To remove the OEM console, lift up on the rear of the console and pull it back away from the dash.



WARNING

If you have removed the front seats, you need to place both front seats back into the vehicle and reconnect the wires from **STEP 6**. Do not secure the seats back to the floor: Reconnect the ground wire to the negative side of the battery. Follow next step (**STEP 11**) and then repeat procedure to remove the front seats. (caution before **STEP 6**)



STEP 11: *TRUCKS ONLY*

With the console out, there is duct work that is exposed from under the dash. Remove the plastic duct that is attached to the upper duct work. With the lower duct piece removed, it now exposes a door.

Insert the key into the ignition, turn to the accessory position, turn on the A/C. When the A/C is turned on, this will allow the exposed door to open.

This door is opened by a C-bracket that comes down from the upper dash. This C-bracket needs to be removed. If this bracket is not removed, the A/C air flow will not be correct.

This C-bracket is attached to the door and a motor that is located in the upper dash. Push the C-bracket to the passenger side of the truck. This will detach the bracket from the door. With the C-bracket in hand, reach up as far up on the bracket and push towards the passenger side of the truck. This will detach the C-bracket from the motor. Give the C-bracket to the owner of the truck or store inside the truck for safe keeping. This bar will need to be reinstalled, if the Stealthbox is removed and air flow is needed to the rear vents.

Use a small screw(not supplied) to hold this door shut. If this door is not screwed shut, air will blow on the driver's feet and reduce pressure from the dash vents.

Continued on Next Page →



STEP 12: Remove the OEM wire harness from the plastic track. Wrap the OEM wiring in black tape.



STEP 13: With the OEM wiring harness out of the way, you need to cut the carpet.

SIDES: From the tape outline of the center console, measure inward to middle of the transmission tunnel 1.5" from the tape. Mark and cut, front to back.

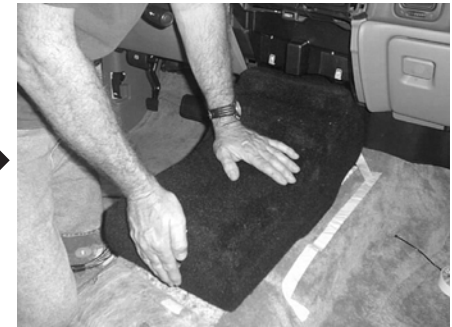
FRONT: Cut left to right at the front area where the outline starts to taper inward.

REAR: Feel for the black plastic mounting bracket. Cut left to right at the transmission tunnel, behind the black plastic mounting bracket. View picture.



STEP 14: With the OEM carpet and the jute (sound deadening) cut out. Position the supplied pair of 3"x3" wax squares in place.

Make sure that the wax square is placed and with the adhesive down and positioned as in the picture.



STEP 15: Thread the supplied pair of socket cup set screws into the Stealthbox. Leaving about 1/4" exposed.

Position the Stealthbox into the mounting location and firmly press down.

The Stealthbox is molded to mirror the floor. It should tuck right in.



STEP 16: When the Stealthbox is removed, the wax square should have the impressions of the socket cup set screws.



STEP 17: ***CAUTION***

Before drilling, make sure that you are not going to be drilling into any gas lines, brake lines, transmission lines, electrical wiring, transfer case (4x4 vehicles) or anything else that might cause a reduction in your weekly pay. Always wear eye protection when drilling.

With the use of a 1/2" drill bit and drill. Drill out the floor at the impressions on the wax squares.



STEP 18: The wire harness from **STEP 12** needs to be rerouted over to the other side of the structure support bar under the dash.

Also at this time, run the speaker wire from the amplifier location to the Stealthbox location.

Double check the woofer for correct functioning.

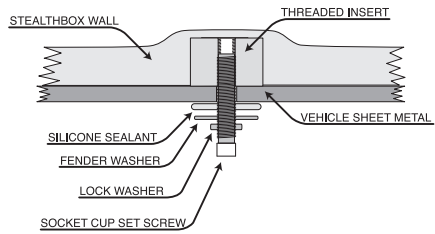


STEP 19: With the wire harness properly tucked under the carpet, use double sided tape (not supplied) to secure the carpet to the metal floor:

If the carpet is not secured to the floor, it will bunch up after the OEM console is reinstalled.

Remove the masking tape that outlined the OEM console from **STEP 2**.

Cont. From Previous Page



STEP 20: Back out the socket cup set screws to expose 1-1/2".

Carefully guide the socket cup set screws through the mounting holes, in the floor:

From under the vehicle, snug tighten the Stealthbox using the supplied hardware. You want a little play in the mounting assembly, to allow proper line up with OEM console in future steps.

If the socket cup set screws are to long or not long enough. Back out for proper needed length.

On 4x4 vehicles, you might not be able to touch the socket cup set screws, from the outside of the vehicle to adjust the length. Lifting the Stealthbox out of the mounting holes and adjusting the length will be needed, from inside the vehicle.



STEP 21: With the OEM console out of the vehicle. You need to remove the outside cosmetic console from the inside structure support console.

Start by pulling the rear cup holders down. Remove the four exposed screws. This will allow you to pull the rear section on the OEM outer cosmetic console off.



STEP 22: *SUVs or trucks with rear stereo controls*

Looking into the OEM console, to the rear. Disconnect the rear stereo controls and the 12v connections.

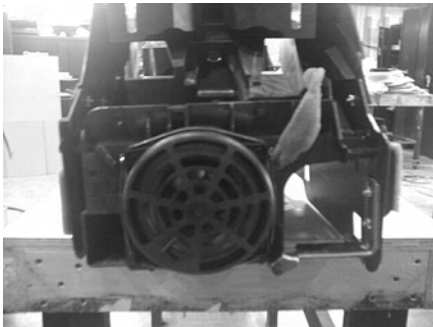
Remove the outside cosmetic console off the inner structure support console.

Trucks Only

With the outside cosmetic console off, remove the rear A/C duct work.



STEP 23: To remove the OEM woofer enclosure. Start by drilling out these pair of rivets. Located on the driver side of the console.

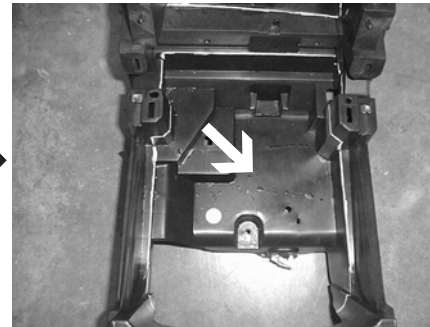


STEP 24: Remove the pair of screws from the front.



STEP 25: Remove the three screws from the passenger side.

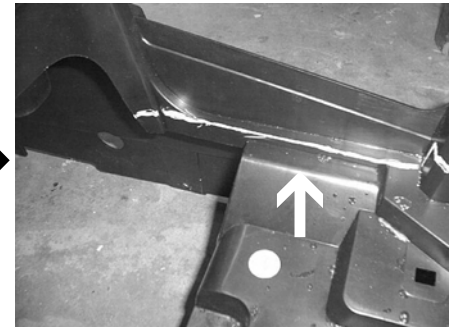
There is one screw that is located on top of the OEM woofer enclosure.



STEP 26: *CAUTION* Read and mark before cutting.

This is a top view of the line that you need to mark across the inner structure console.

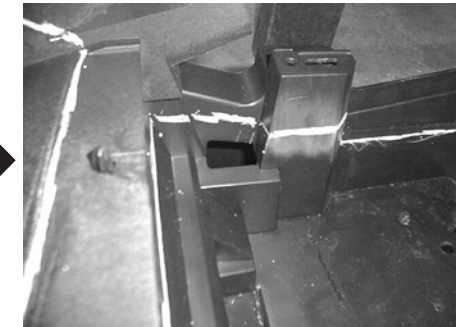
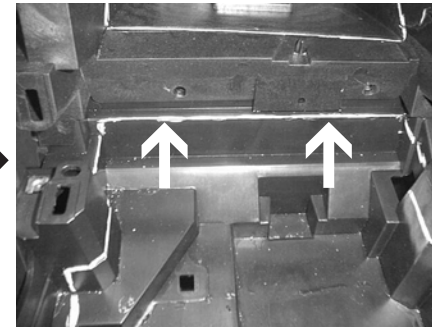
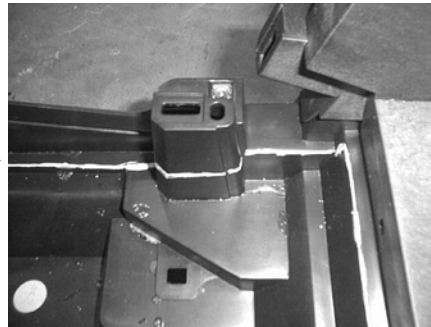
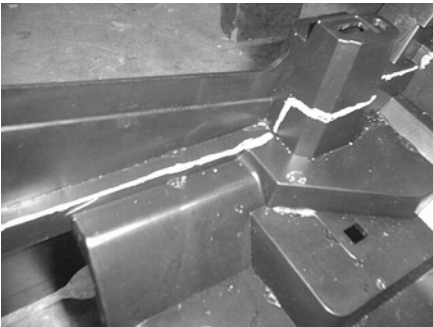
This shelf area and upper pocket has to be removed.



STEP 27: This is a view of the driver's side, rear area. The mark lines needs to follow the inner edge of this flat lip.

Straight across, do not follow the edge as it curves up towards the rear.

Cont.
From
Previous
Page



STEP 28: This is a view of the driver's side, front area.

The mark lines needs to follow this edge forward, to this mounting leg.

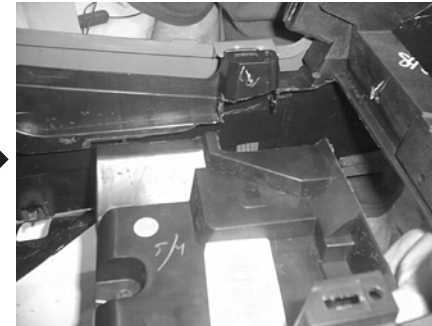
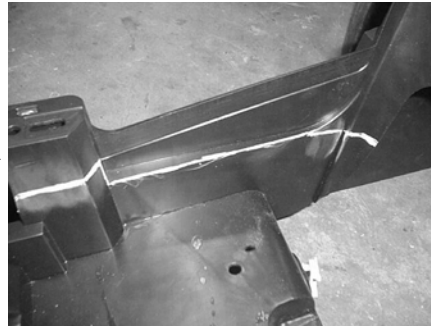
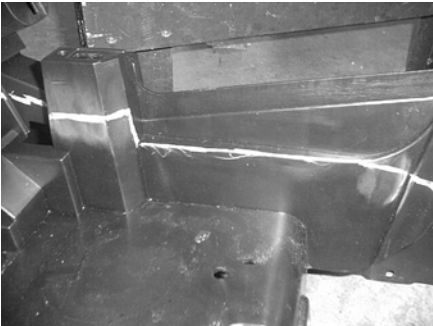
(Arrow) The mark line needs to follow up this mounting leg and stop at this upper wall edge.

STEP29: The mark line needs to follow around this mounting leg. Follow this inside edge to the front.

STEP 30: The mark line needs to jet up slightly to this front edge. Mark across this edge from the driver's side to the passenger's side.

STEP 31: These next three STEPS are just mirroring STEPS 27,28 & 29. This is for the passenger's side of the inner console.

The mark line needs to follow across to this passenger's side mounting leg. Using this inner edge as a guide.



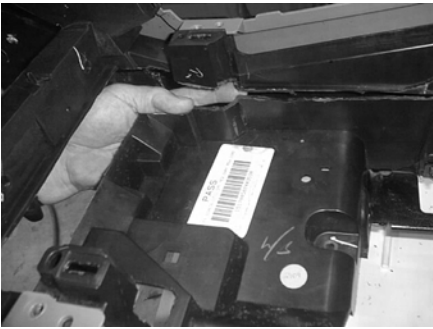
STEP 32: The mark line needs to come around this leg. Go down to the inner edge of this flat lip.

STEP 33: Follow the inner edge of this flat lip, straight back. Again, do not follow this inner edge as it curves up.

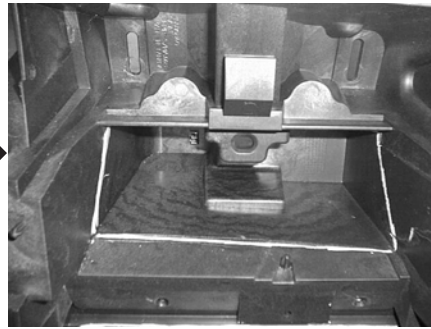
STEP 34: Time to cut. Using a wheel saw or blade saw will be easier to use, then a jig saw. Follow the mark lines with the cutting tool. This is the view of the driver's side, from **STEP 27**.

STEP 35: This is the view of the front, from **STEP 28**.

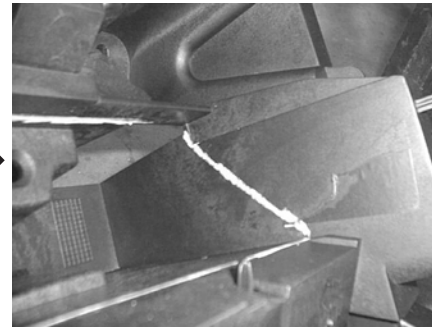
Cont.
From
Previous
Page



STEP 36: This is the view of the passenger's side, from **STEP 29**.



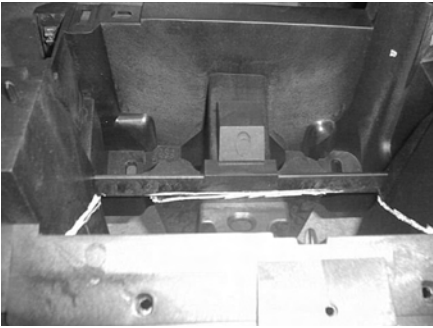
STEP 37: This is the view of the upper pocket, that needs to be removed.
The mark lines follow the bottom, using this edge as a guide.



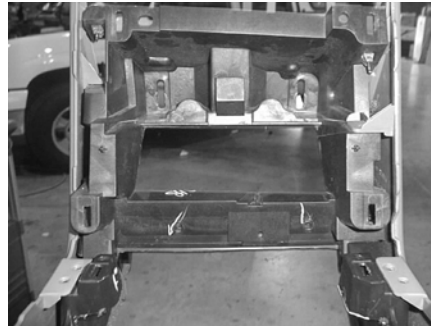
STEP 38: The passenger's side mark line goes from the bottom mark line from **STEP 37**, angling up to the upper corner of this exposed upper wall.



STEP 39: The driver's side mark line goes from the bottom mark line from **STEP 37**, angling up to this upper corner of this exposed upper wall.



STEP 40: The upper mark line goes across the top, using this exposed front edge.



STEP 41: Time to cut. Follow the mark lines with the cutting tool.
After all cutting is completed. Reassemble the inner console and outer console back together.



STEP 42: Place the OEM console into the vehicle. Sleeve the OEM console over the Stealthbox. Make sure that the OEM console's mounting legs are placed back over the OEM position studs.



STEP 43: When the OEM console is placed over the Stealthbox, it should be snug.
If there are any obstructions, that do not allow the OEM console to fit properly, trimming of the inner console is needed. Mark the obstruction and cut only what is needed.

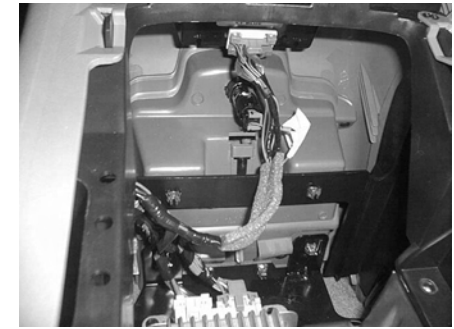
Cont.
From
Previous
Page



STEP 44: The pair of 10mm bolts that were removed in **STEP 5**, need to be replaced. You may have to reposition the OEM console, to have it line up like factory.



STEP 45: With the upper storage pocket in hand from **STEP 4**, reconnect the 12v outlets. Then snap the upper storage pocket back into place.



STEP 46: Reconnect the rear stereo controls and 12v plug from **STEP 22**.

Also reconnect the white plug with the lever from **STEP 9**.



STEP 47: Replace the rear of the outer cosmetic console and the four mounting screws from **STEP 21**.



STEP 48: Replace the main storage bucket and storage lid from **STEP 6 & 7**.



STEP 49: Replace the cup holders from **STEP 8**. As long as everything is lining up at this point. Securely tighten the pair of mounting bolts from **STEP 20**.

You can use undercoating to coat the mounting assembly. This will prevent any type of rusting.

Cont.
From
Previous
Page



STEP 50: Snap the dash trim panel back into place from **STEP 3**.



STEP 51: Place the front seats back into place from **STEP 1**.

Remember to reconnect the wiring connection under the seats.



**CONGRATULATIONS!
INSTALL COMPLETE.**

- Included Hardware:**
- (2) 3/8" Split Lock Washer
 - (2) 3/8" x 1-1/4" Fender Washer
 - (2) 3/8"-16, 2-1/4" Socket Cup Set Screws
 - (2) 3/8" - 16 Hex Nuts
 - (2) 3"x 3" Wax Squares

Difficulty Of Installation:



Specifications:

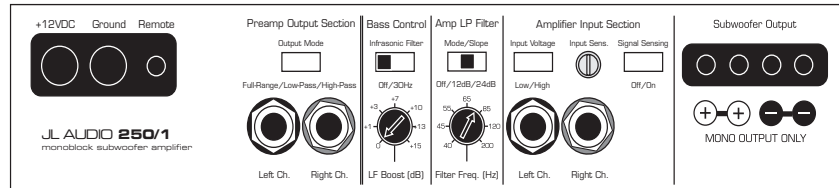
Enclosure Type: Acoustical Suspension (Sealed)

Driver Type: 10W3v2-D2

Nominal Impedance: 4Ω

Cont. Power Handling: 300Watts

JL Audio recommends using a high quality amplifier such as the JL Audio 250/1. The diagram below shows the recommended crossover, infrasonic filter and equalizer settings for the 250/1 when being used to power your Stealthbox®.



The JL Audio 250/1 is a very versatile audio component. Please consult the owner's manual for detailed information about installing and tuning this amplifier.

Mid/High Frequency Driver Information:

Front Location Driver Size:

6.5" separates

Applicable JL Audio Products:

TR,VR,XR & ZR 650-CSi

Rear Location Driver Size (TRUCKS):

4"x6"

Applicable JL Audio Products:

TR400-CXi

Rear Location Driver Size (SUV's):

6.5"

Applicable JL Audio Products:

TR,VR & XR 650-CXi



JL AUDIO
Ahead of the Curve™

www.jlaudio.com

10369 N. Commerce Pkwy, Miramar, Florida 33025-392

Phone: 954.443.1100

Fax: 954.443.1111

SB-GM-BURBCNSL/10W3v2, JL AUDIO, Inc 2005

Page 8

Sheet SKU#011167 3/08/2005